



Noise Monitoring Result

Day Time (0700 - 1900hrs on normal weekdays)

Location: M1a - Harbour Road Sports Centre

Date	Time	Weather	Measurement Noise Level			Baseline Level	Construction Noise Level	Limit Level
			Leq	L10	L90	Leq	Leq	Leq
Unit: dB(A), (30-min)								
2/5/2017	13:30	Fine	75.5	77.0	73.0	72	73	75
8/5/2017	14:48	Fine	75.5	76.1	70.5	72	73	75
16/5/2017	13:48	Cloudy	78.0	80.5	73.3	72	77	75
25/5/2017	10:45	Fine	78.2	79.5	75.7	72	77	75

Location: M2b - Noon-day gun area

Date	Time	Weather	Measurement Noise Level			Baseline Level	Construction Noise Level	Limit Level
			Leq	L10	L90	Leq	Leq	Leq
Unit: dB(A), (30-min)								
2/5/2017	14:11	Fine	69.2	71.0	66.5	68	64	75
8/5/2017	15:37	Fine	70.5	72.0	65.5	68	67	75
18/5/2017	14:00	Cloudy	68.5	70.5	65.5	68	61	75
26/5/2017	14:00	Fine	69.3	70.9	66.9	68	64	75

Location: M3a - Tung Lo Wan Fire Station

Date	Time	Weather	Measurement Noise Level			Baseline Level	Construction Noise Level	Limit Level
			Leq	L10	L90	Leq	Leq	Leq
Unit: dB(A), (30-min)								
2/5/2017	14:55	Fine	66.1	67.0	64.5	69	66	75
9/5/2017	10:00	Fine	66.4	67.5	63.5	69	66	75
15/5/2017	15:00	Fine	71.4	73.0	62.5	69	68	75
25/5/2017	13:20	Fine	66.5	67.5	65.3	69	67	75

Location: M4b - Victoria Centre

Date	Time	Weather	Measurement Noise Level			Baseline Noise Level	Construction Noise Level	Limit Level
			Leq	L10	L90	Leq	Leq	Leq
Unit: dB(A), (30min)								
4/5/2017	15:27	Cloudy	64.8	66.0	62.5	67	65	75
9/5/2017	10:50	Fine	66.1	67.0	63.5	67	66	75
16/5/2017	15:45	Fine	65.3	66.5	63.0	67	65	75
25/5/2017	14:05	Fine	71.6	75.1	66.7	67	70	75

Location: M5b - City Garden

Date	Time	Weather	Measurement Noise Level			Baseline Level	Construction Noise Level	Limit Level
			Leq	L10	L90	Leq	Leq	Leq
Unit: dB(A), (30min)								
4/5/2017	16:10	Cloudy	70.5	74.0	67.5	68	67	75
10/5/2017	10:05	Fine	72.8	74.5	67.5	68	71	75
18/5/2017	15:40	Fine	73.1	74.0	69.0	68	71	75
25/5/2017	14:55	Fine	74.9	76.1	71.0	68	74	75

Location: M6 - HK Baptist Church Henrietta Secondary School

Date	Time	Weather	Measurement Noise Level			Baseline Level	Construction Noise Level	Limit Level
			Leq	L10	L90	Leq	Leq	Leq
Unit: dB(A), (30-min)								
4/5/2017	16:55	Cloudy	66.8	67.5	65.0	71	67	70
10/5/2017	10:45	Fine	68.4	69.5	65.3	71	68	70
18/5/2017	15:00	Fine	69.8	70.5	66.5	71	70	70
25/5/2017	15:30	Fine	64.4	65.8	62.3	71	64	70



Noise Monitoring Result

Day Time (0700 - 1900hrs on normal weekdays)

Location: M7e - International Finance Centre (Eastern End of Podium) (Reference Station)

Date	Time	Weather	Measurement Noise Level			Baseline Level	Construction Noise Level	Limit Level
			Leq	L10	L90	Leq	Leq	Leq
Unit: dB(A), (30-min)								
2/5/2017	10:55	Cloudy	63.9	66.0	61.0	67	64	N/A
8/5/2017	10:53	Fine	66.8	68.5	62.0	67	67	N/A
17/5/2017	15:48	Fine	68.4	69.5	65.0	67	63	N/A
25/5/2017	09:50	Fine	71.1	74.0	68.0	67	69	N/A

Location: M7w - International Finance Centre (Western End of Podium)

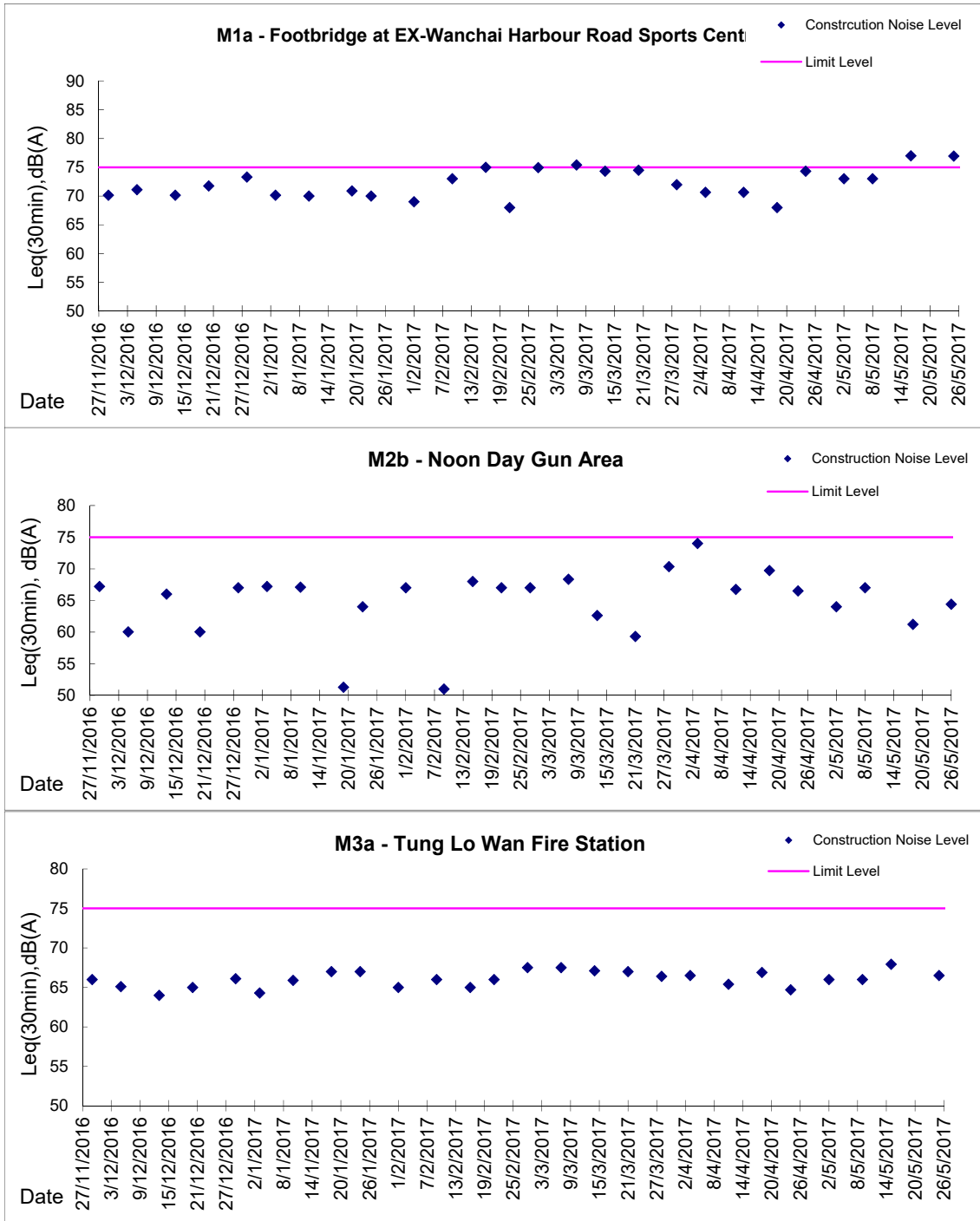
Date	Time	Weather	Measurement Noise Level			Baseline Level	Construction Noise Level	Limit Level
			Leq	L10	L90	Leq	Leq	Leq
Unit: dB(A), (30-min)								
2/5/2017	10:20	Fine	66.0	67.5	63.5	69	66	75
8/5/2017	10:20	Fine	63.9	65.5	61.5	69	64	75
17/5/2017	15:15	Fine	67.4	69.0	62.0	69	67	75
25/5/2017	09:15	Fine	67.2	69.0	64.6	69	67	75

Location: M8 - City Hall

Date	Time	Weather	Measurement Noise Level			Baseline Level	Construction Noise Level	Limit Level
			Leq	L10	L90	Leq	Leq	Leq
Unit: dB(A), (30-min)								
2/5/2017	11:30	Fine	64.5	66.5	61.5	64	55	70
8/5/2017	11:30	Fine	61.0	63.8	60.0	64	61	70
17/5/2017	16:27	Fine	66.2	67.5	63.0	64	62	70
25/5/2017	08:15	Fine	61.1	63.0	56.8	64	61	70

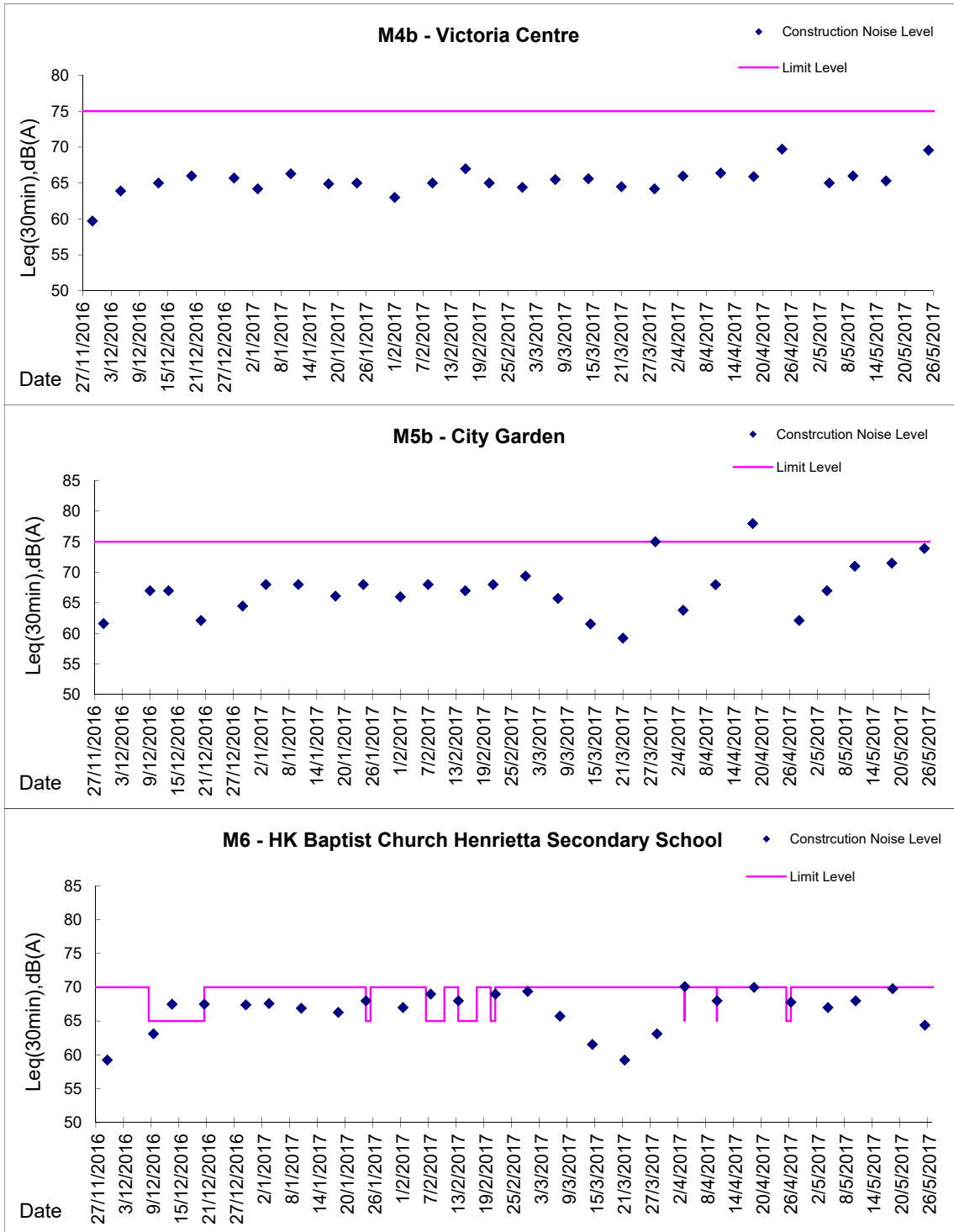
Graphic Presentation of Noise Monitoring Result

Day Time (0700 - 1900hrs on normal weekdays)



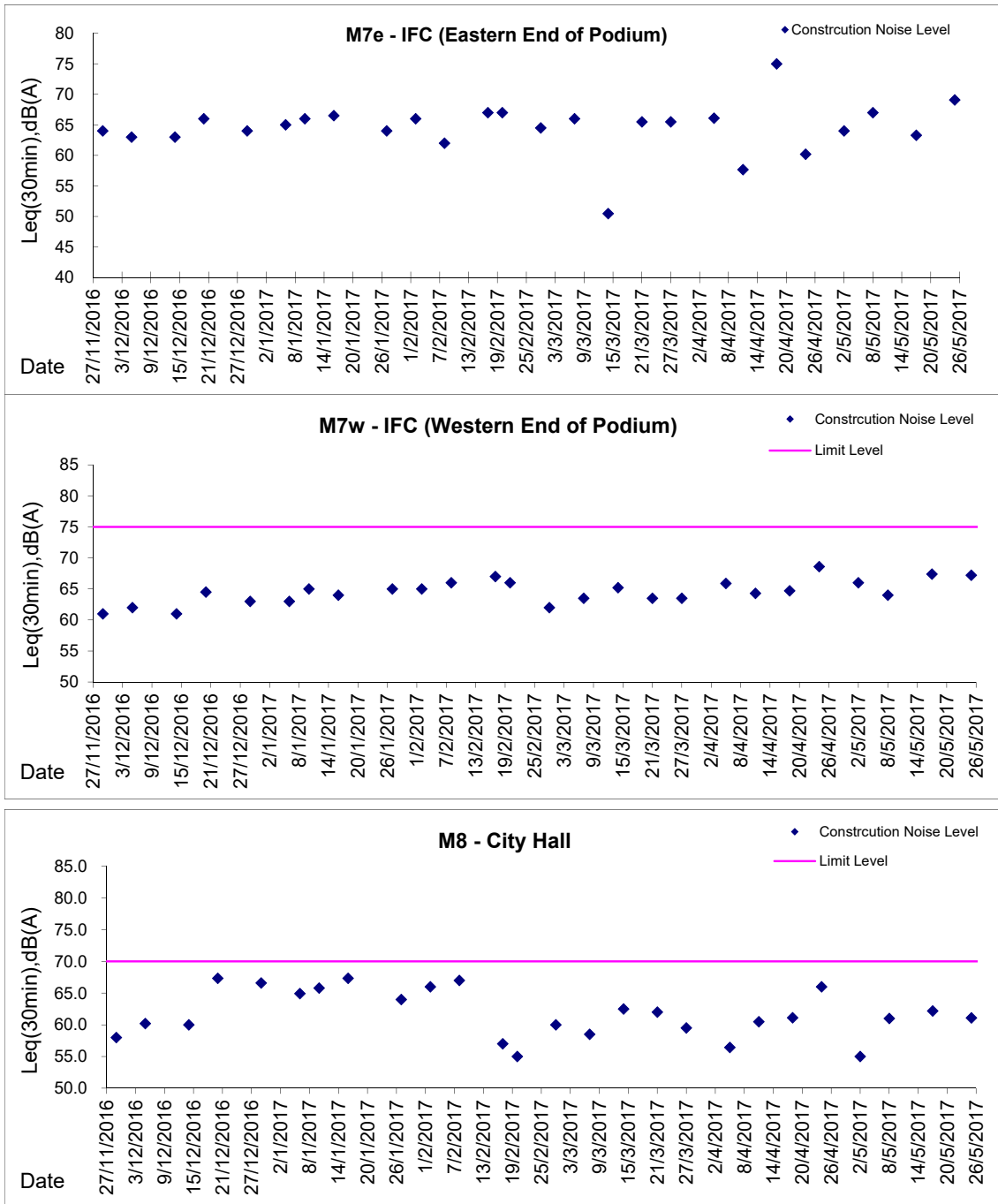
Graphic Presentation of Noise Monitoring Result

Day Time (0700 - 1900hrs on normal weekdays)



Graphic Presentation of Noise Monitoring Result

Day Time (0700 - 1900hrs on normal weekdays)



* Remark: M7e - IFC (Eastern End of Podium) is a reference monitoring station